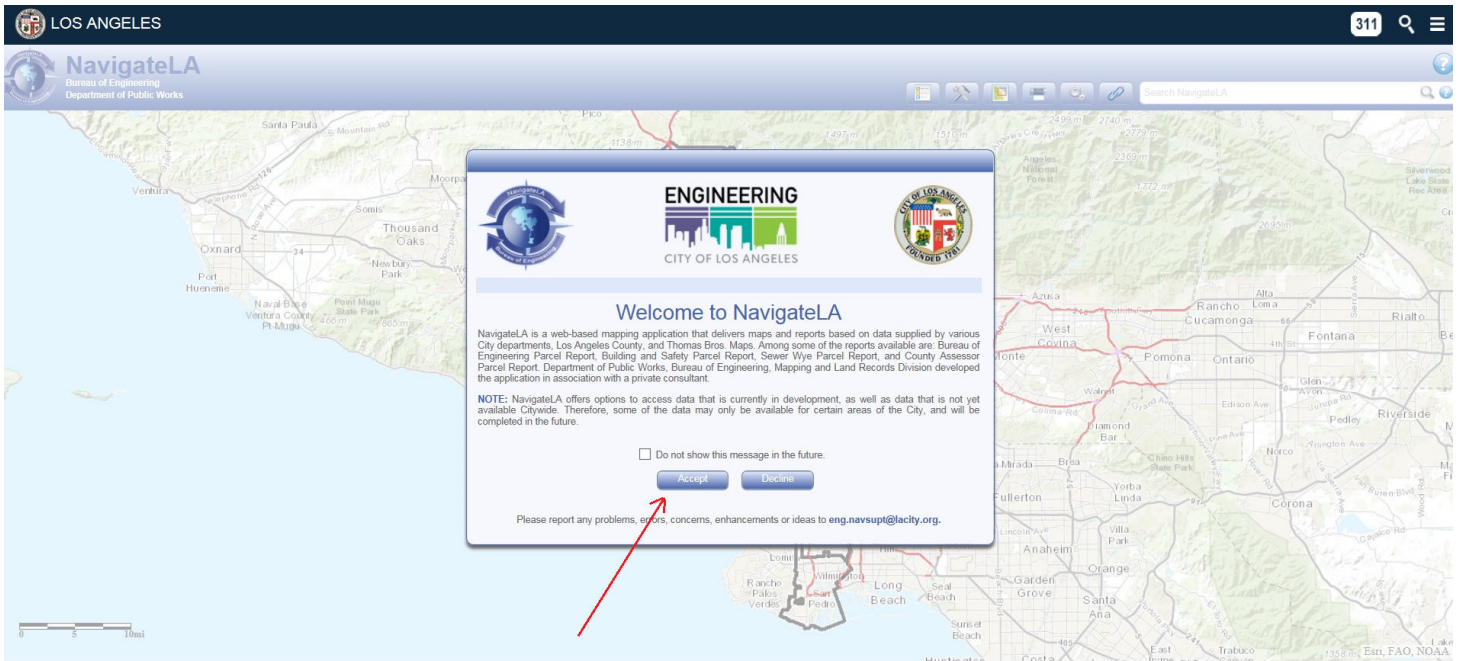
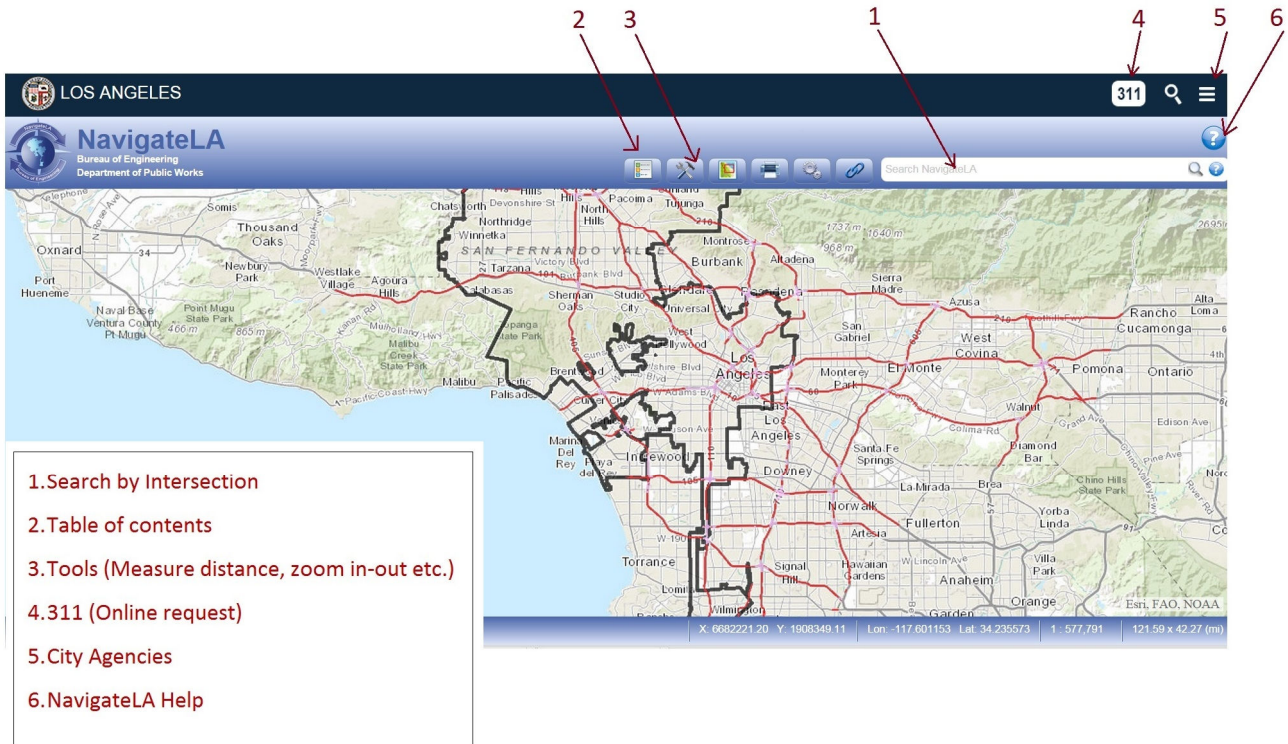


NavigateLA Tutorial




Step 1: Click Accept




The screenshot displays the NavigateLA web application interface. At the top left, the Los Angeles logo and 'LOS ANGELES' are visible. The main header includes the 'NavigateLA' logo and the text 'Bureau of Engineering Department of Public Works'. A search bar at the top right contains the text 'Tampa & Vanowen', which is circled in red. Below the header is a map of an urban area with street names like 'VANOWEN ST', 'AURA AVE', and 'TAMPA AVE'. A 'Results' pop-up window is open on the right side of the map, showing 'Intersection Search: TAMPA AVE AT VANOWEN ST, 91335' and 'Records Found: 1'. The bottom of the interface shows a Google Maps logo and coordinate information: 'X: 6631934.18 Y: 1935448.54 Lon: -117.767321 Lat: 34.310472 1: 1,128 1,254 x 501 (ft)'.

Step 2. Enter the Intersection name and press enter

Example : Tampa & Vanowen or Tam/Van

Step 3 : From the Table of Contents put a check mark on LADOT  LADOT

Step 4 : Click on  to expand group

Step 5 : Put a check mark on Traffic Data  Traffic Data

Step 6 : Click on Blue Dot for Traffic Data & Counts 

LOS ANGELES 311

NavigateLA
Bureau of Engineering
Department of Public Works

tampa/vanowen

Table of Contents

Filter Layers

- Crosswalks
- DASH Routes
- Parking Meter Sensors
- Railroad Crossings
- Regulatory Signs
- Stop and Yield Signs
- Traffic Data
- LAPD
- LAUSD Schools
- Mayor's Office
- Metro Bus and Metro Rail
- Office of Finance
- Recreation and Parks Department
- Survey Information
- Sewer Information
- Stormwater Information
- Street Information

Report Window

Results Report

LADOT Traffic Data

ID	31235
Location	VANOWEN ST at TAMPA AVE

Automatic Count

PDF File [TAMPA.VANOWEN.071022-AUTO](#)
[VANTAM080418](#)

Google maps X: 6393845.34 Y: 1893488.13 Lon: -118.554982 Lat: 34.194121 1 : 1,128 1,075 x 408 (ft)

Step 7 . A report Window for LADOT Traffic data will pop up. Click on the available counts for the intersection



24 Hours Traffic Volume

City of Los Angeles
Department of Transportation

RAW DATA TAMVAN1022S.rdf
 COUNTER <ENT/LAVEDIA
 DATE 10/22/2007
 START TIME 12:00 AM
 DATE PREPARED 25-Oct-07
 SENSOR LAYOUT '11'
 SENSOR SPACING '0.0'

LOCATION **TAMPA AV AT VANOWEN ST** DAY OF WEEK **MONDAY**
 INTERSECTION **N/S STREET** DOT DISTRICT **WEST VALLEY**
 DESCRIPTION **TAMVAN** WEATHER **CLEAR**

NORTH / WEST BOUND

SOUTH / EAST BOUND

TIME	1ST	2ND	3RD	4TH	HOUR TOTAL	1ST	2ND	3RD	4TH	HOUR TOTAL	TOTAL
	QTR	QTR	QTR	QTR		QTR	QTR	QTR	QTR		
12 AM	14	8	6	7	35	27	15	15	11	68	103
1 AM	8	10	4	6	28	21	15	12	11	59	87
2 AM	3	2	12	8	25	4	6	7	7	24	49
3 AM	8	7	6	13	34	6	8	14	7	35	69
4 AM	19	17	18	36	90	11	15	17	40	83	173
5 AM	47	56	54	65	222	61	63	102	125	351	573
6 AM	62	86	102	113	363	157	202	245	276	880	1243
7 AM	107	109	91	87	394	358	397	417	380	1552	1946
8 AM	85	108	89	94	376	350	329	281	273	1233	1609
9 AM	83	109	109	107	408	228	203	192	174	797	1205
10 AM	107	121	120	125	473	174	179	151	166	670	1143
11 AM	126	113	113	90	442	184	179	183	173	719	1161
12 NN	73	101	103	111	388	179	195	171	187	732	1120
1 PM	109	99	94	118	420	204	181	215	193	793	1213
2 PM	96	163	129	139	527	218	230	270	216	934	1461
3 PM	125	137	173	154	589	252	203	228	223	906	1495
4 PM	150	166	171	181	668	268	204	230	217	919	1587
5 PM	135	167	135	126	563	211	251	205	254	921	1484
6 PM	109	120	108	99	436	209	195	218	200	822	1258
7 PM	124	98	70	77	369	206	188	139	149	682	1051
8 PM	60	72	52	64	248	150	122	128	107	507	755
9 PM	51	52	52	32	187	129	136	107	86	458	645
10 PM	37	23	28	19	107	90	58	58	57	263	370
11 PM	25	19	15	14	73	46	44	32	31	153	226

FIRST 12-HOURS PEAK QUARTER COUNT
 LAST 12-HOURS PEAK QUARTER COUNT
 24 HOUR VEHICLES TOTAL
 TOTAL VEHICLES STANDARD DEVIATION (STD)

126	11 AM	1ST
181	4 PM	4TH
	7465	
[+,-]	194.45	

417	7 AM	3RD
270	2 PM	3RD
	14561	22026
[+,-]	401.09	572.78

PEAK HOURS VOLUME

NORTH / WEST BOUND

SOUTH / EAST BOUND

BOTH DIRECTIONS

	PEAK HOUR	VOLUME VEHICLES	PEAK HOUR	VOLUME VEHICLES	PEAK HOUR	VOLUME VEHICLES
FIRST 12H PEAK	10 AM	473	7 AM	1552	1552	2025
LAST 12H PEAK	4 PM	668	2 PM	934	934	1602
FIRST 12H PEAK STD		[+,-] 473.00		[+,-] 21.71		494.71
LAST 12H PEAK STD		[+,-] 11.20		[+,-] 21.74		32.95

PROGRAM BY LADDIT

Step 8 . Traffic volume count